

S&P/Experian Consumer Credit Default Indices Show Composite Default Rate Drop To One-Year Low In June 2017

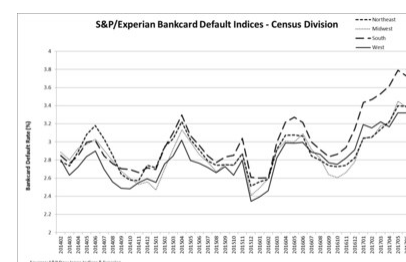
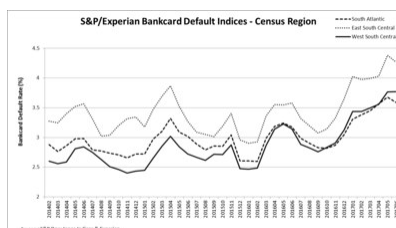
Bank Card Default Rate Finally Drops in June

NEW YORK, July 18, 2017 /PRNewswire/ -- S&P Dow Jones Indices and Experian released today data through June 2017 for the S&P/Experian Consumer Credit Default Indices. The indices represent a comprehensive measure of changes in consumer credit defaults and show that the composite rate dropped four basis points from last month to 0.82%. The bank card default rate experienced its first drop in nine months with four basis points to 3.49%. Auto loan defaults decreased three basis points from the previous month to 0.82%, and the first mortgage default rate dropped four basis points from May to 0.60%.

Three of the five major cities saw their default rates decrease in the month of June. New York had the largest decrease, down 13 basis points from May to 0.88%. Miami reported 1.17% for June, dropping 12 basis points from the previous month. Chicago came in at 0.91%, down six basis points from May. Dallas and Los Angeles both remain unchanged from last month at 0.67%, and 0.66% respectively.

Although the National bank card default rate experienced its first drop in nine months, it is still high. When comparing the bank card default rate among the four census divisions, the default rate in the South is considerably higher than the other three census divisions. The East South Central Census Region – comprised of Kentucky, Tennessee, Alabama, and Mississippi – has the highest bank card default rate. As per Bureau of Labor Statistics, these states have some of the lowest median household income.

"The economic expansion started in June 2009 and just passed its eighth anniversary," says David M. Blitzer, Managing Director & Chairman of the Index Committee at S&P Dow Jones Indices. "For most of those eight years, the consumers, politicians and business people expected bubbles, rampant inflation and budget crises. None of these fears were realized. Inflation is one to two percent, debt service levels are close to record lows. Disposable income is growing and supporting spending growth. Based on national averages, consumers are in good financial shape. Consumer credit defaults across mortgages, bank cards and auto loans are at levels similar to those before the financial crisis.



"While nationally overall consumers' financial condition is good, there are regional variations as shown by the charts. Regional patterns show that household income is one determinant of bank card default rates. The continuing decline in the unemployment rate and rising employment have not created any upward pressure on wages and salaries. Wage growth is about 2%-3% annually, barely enough to stay ahead of inflation. Additional improvements in the economy, both nationally and regionally, are needed to push bank card default rates lower."

The table below summarizes the June 2017 results for the S&P/Experian Credit Default Indices. These data are not seasonally adjusted and are not subject to revision.

S&P/Experian Consumer Credit Default Indices National Indices			
Index	June 2017 Index Level	May 2017 Index Level	June 2016 Index Level
Composite	0.82	0.86	0.82

First Mortgage	0.60	0.64	0.65
Second Mortgage	0.49	0.54	0.48
Bank Card	3.49	3.53	3.11
Auto Loans	0.82	0.85	0.91

Source: S&P/Experian Consumer Credit Default Indices
Data through June 2017

The table below provides the S&P/Experian Consumer Default Composite Indices for the five MSAs:

Metropolitan Statistical Area	June 2017 Index Level	May 2017 Index Level	June 2016 Index Level
New York	0.88	1.01	0.83
Chicago	0.91	0.97	1.01
Dallas	0.67	0.67	0.74
Los Angeles	0.66	0.66	0.67
Miami	1.17	1.29	1.31

Source: S&P/Experian Consumer Credit Default Indices
Data through June 2017

For more information about S&P Dow Jones Indices, please visit www.spdji.com.

ABOUT THE S&P/EXPERIAN CONSUMER CREDIT DEFAULT INDICES

Jointly developed by S&P Dow Jones Indices LLC and Experian, the S&P/Experian Consumer Credit Default Indices are published on the third Tuesday of each month at 9:00 am ET. They are constructed to track the default experience of consumer balances in four key loan categories: auto, bankcard, first mortgage lien and second mortgage lien. The Indices are calculated based on data extracted from Experian's consumer credit database. This database is populated with individual consumer loan and payment data submitted by lenders to Experian every month. Experian's base of data contributors includes leading banks and mortgage companies, and covers approximately \$11 trillion in outstanding loans sourced from 11,500 lenders.

For more information, please visit: www.consumercreditindices.standardandpoors.com.

ABOUT S&P DOW JONES INDICES

S&P Dow Jones Indices is the largest global resource for essential index-based concepts, data and research, and home to iconic financial market indicators, such as the S&P 500® and the Dow Jones Industrial Average®. More assets are invested in products based on our indices than based on any other provider in the world. With over 1,000,000 indices and more than 120 years of experience constructing innovative and transparent solutions, S&P Dow Jones Indices defines the way investors measure and trade the markets.

S&P Dow Jones Indices is a division of S&P Global (NYSE: SPGI), which provides essential intelligence for individuals, companies, and governments to make decisions with confidence. For more information, visit www.spdji.com.

ABOUT EXPERIAN

Experian is the world's leading global information services company. During life's big moments – from buying a home or a car, to sending a child to college, to growing a business by connecting with new customers – we empower consumers and our clients to manage their data with confidence. We help individuals to take financial control and access financial services, businesses to make smarter decisions and thrive, lenders to lend more responsibly, and organisations to prevent identity fraud and crime.

We have more than 16,000 people operating across 37 countries and every day we're investing in new technologies, talented people and innovation to help all our clients maximize every opportunity. We are listed on the London Stock Exchange (EXPN) and are a constituent of the FTSE 100 Index.

Learn more at www.experianplc.com or visit our global content hub at our [global news blog](#) for the latest news and insights from the Group

FOR MORE INFORMATION:

David Blitzer

Managing Director and Chairman of Index Committee
New York, USA

(+1) 212 438 3907
david.blitzer@spglobal.com

Luke Shane

North America Communications
New York, USA
(+1) 212 438 8184
luke.shane@spglobal.com

Matt Tatham

Experian Public Relations
(+1) 917 446 7227
matt.tatham@experian.com

SOURCE S&P Dow Jones Indices

<https://press.spglobal.com/2017-07-18-S-P-Experian-Consumer-Credit-Default-Indices-Show-Composite-Default-Rate-Drop-To-One-Year-Low-In-June-2017>